

COMMON ENTRANCE TEST FOR PG ADMISSION, 2019

Question Booklet No. **3419990**

Full Marks : 200

Subject: **BLISC**

Question Booklet Series: **D**

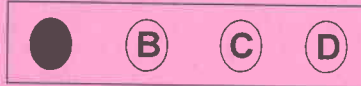
Subject Code No.: --

Answer all the questions. Each question has the same weightage.

Read the following instructions carefully before you start answering.

INSTRUCTIONS

1. The question Booklet is printed in four Series e.g. (A), (B), (C) and (D). The candidate has to indicate the Series of the question booklet in the space provided in the OMR Answer Sheet . For example, if the candidate gets Series (A) booklet, he / she has to indicate on the front side of the OMR Answer Sheet with Black ink ball point pen only as indicated below:



2. There are 50 questions inside this question booklet. Immediately after you have been instructed to open this question booklet, ensure that any page / question is not missing / not printed / torn /repeated. In case you find any defect anywhere in the question booklet, immediately get it replaced by the Invigilator.
3. Each question carries 4 marks. 1(one) mark will be deducted for each wrong answer(negative marking).
4. Write your Form No and put signature in the space provided.
5. Before answering, write down the necessary information on the OMR Answer Sheet as per your Application Form and Admit Card in the specific space provided.
6. With each question you will find 4 possible answers marked by the letters A, B, C & D. Read each question carefully and find out which answer, according to you, is correct / most appropriate / best. Indicate your answer by darkening the appropriate circle completely in the OMR Answer Sheet corresponding to the question. For marking answers, use black ink ball pen only. If 'B' is the correct answer in a case, mark as below:



7. Do not fold or make any stray marks on the OMR Answer Sheet.
8. You can use the blank space of the last page for rough work. Do not tear it off from the Question Booklet.
9. After the examination has been over, you must submit OMR Answer Sheet to the Invigilator.
10. OMR Answer Sheet is designed for computer evaluation. If you do not follow the instructions given above and shown in the OMR Answer Sheet, it may make evaluation by computer difficult. Any resultant loss to the candidate on the above account shall be of the candidate only.
11. No candidate shall be allowed to use Mobile phone. Log tables or Calculator of any description in the examination hall / room.

1. By simplifying  $[(16x^6 y^5)^2] / (2x^2 y^2)^4 \times [x^5 y^3 / x^3 y^2]$ , answer will be  
 (A)  $16x^4 y^2$  (B)  $16x^5 y^3$  (C)  $16x^6 y^3$  (D)  $16x^7 y^5$
2. What are ultrasonic sound?  
 (A) Sound of frequency above 2 KHz (B) Sound of frequency above 20 KHz  
 (C) Sound of frequency above 200 KHz (D) Sound of frequency above 20 Hz
3. In order for a massive star to form a black hole, it must first  
 (A) Run out of fuel (B) Emit x-ray (C) Expand (D) Begin rotating
4. I ..... to New York last Christmas.  
 (A) have flown (B) fly (C) flew (D) am flowing
5. The synonym of FIDELITY is:  
 (A) Faithfulness (B) Resourcefulness (C) Strength (D) Weakness
6. India Post released a special stamp cover on Ice Stupa in \_\_\_\_\_.  
 (A) Jammu (B) Gulmarg (C) Pahalgam (D) Leh
7. Which of the following country supported India's permanent seat in United Nations Security Council (UNSC)?  
 (A) UK (B) Russia (C) Pakistan (D) France
8. Express in one word: "To accustom oneself to a foreign climate"  
 (A) Adapt (B) Adopt (C) Accustom (D) Acclimatize
9. If  $y = f(x)$  is a function, then  $x$  is known as  
 (A) Independent variable (B) Dependent variable  
 (C) Parameter (D) Constant
10. Ocean acidification describes the decrease in ocean pH that is caused by ----- emissions into the atmosphere  
 (A) Anthropogenic carbon dioxide (CO<sub>2</sub>) (B) Methane  
 (C) Nitrous oxide (D) Ozone
11. Find out whether there is any grammatical error in below sentence: "As much as I admire him for his sterling qualities/ I cannot excuse him for/ being unfair to his friends"  
 (A) As much as I admire him for his sterling qualities  
 (B) I cannot excuse him for  
 (C) being unfair to his friends  
 (D) No error
12. How many times in a day, are the hands of a clock in straight line but opposite in direction?  
 (A) 20 (B) 22 (C) 24 (D) 48
13. When was IRDA established?  
 (A) 1996 (B) 1999 (C) 1991 (D) 1989
14.  $1 + \cot^2(2\theta) =$   
 (A)  $\sec^2\theta$  (B)  $\operatorname{cosec}^2\theta$  (C)  $\operatorname{cosec}^2(2\theta)$  (D)  $\sec^2(2\theta)$
15. Find the correctly spelt word  
 (A) Bouquete (B) Bouquette (C) Bouquet (D) Boquet
16. One picosecond =  
 (A)  $10^{(-9)}$  second (B)  $10^{(-12)}$  second (C)  $10^{(-15)}$  second (D)  $10^{(-18)}$  second
17. One Yottabyte is equal to  
 (A)  $10^{15}$  Bytes (B)  $10^{18}$  Bytes (C)  $10^{21}$  Bytes (D)  $10^{24}$  Bytes

18. The highest power of 17 which can divide exactly the following:  
 $(18^2 - 1)(18^4 - 1)(18^6 - 1)(18^8 - 1) \dots (18^{16} - 1)(18^{18} - 1)$  is :  
 (A) 1 (B) 17 (C) 9 (D) 13
19. If  $\log_x y = 100$  and  $\log_2 x = 10$ , then the value of y is:  
 (A)  $2^{10}$  (B)  $2^{100}$  (C)  $2^{1000}$  (D)  $2^{10000}$
20. What is the output of an OR Gate when both inputs are 1?  
 (A) 0 (B) 1 (C) Either 0 or 1 (D) None
21. Exercise Sampriti is the joint military exercise between India and \_\_\_\_\_.  
 (A) Myanmar (B) China (C) Nepal (D) Bangladesh
22. A hard disk is divided into tracks which are further subdivided into  
 (A) Clusters (B) Sectors (C) Vector (D) Head
23. In a room there are 2 green chairs, 3 yellow chairs and 4 blue chairs. In how many ways can you choose 3 chairs so that at least one yellow chair is included?  
 (A) 3 (B) 30 (C) 64 (D) 84
24. The antonym of BELITTLE is:  
 (A) Criticise (B) Flatter (C) Exaggerate (D) Adore
25. Find the average of first 97 natural numbers.  
 (A) 47 (B) 34 (C) 48 (D) 49
26. The subject "Anthropocene" deals with which of the following topic?  
 (A) Impact of human activity on climate change  
 (B) Impact of climate on human activity  
 (C) Relation between human activity and environment  
 (D) None of the above
27. Who won the 'Global Teacher Prize' 2019?  
 (A) Peter Druke (B) Mellice Wonder (C) Walder Moore (D) Peter Tabichi
28. Convert the binary equivalent 10101 to its decimal equivalent.  
 (A) 21 (B) 12 (C) 22 (D) 31
29. Which of the following is awarded for excellence in newspaper journalism, literary achievements, musical composition?  
 (A) Nobel Prize (B) Abel Prize (C) Pulitzer Prize (D) Oscar Awards
30. Which among the following was the First Revolutionary organization of Bengal?  
 (A) Hindustan Socialist Party (B) Anushilan Samiti  
 (C) India House (D) Jugantar Party
31. The term PVC used in the plastic industry stands for  
 (A) polyvinyl chloride (B) polyvinyl carbobate  
 (C) phosphor vanadiu chloride (D) phosphavinyl chloride
32. Three unbiased coins are tossed. What is the probability of getting at most two heads?  
 (A)  $3/4$  (B)  $1/4$  (C)  $2/3$  (D)  $7/8$
33. April 1 to 7 is observed as Prevention of \_\_\_\_\_ Week every year in India.  
 (A) Diabetes (B) Blindness (C) Malaria (D) Typhoid

34. He said

P : here is the cat

Q : throughout the night

R : which had been paying havoc with things

S : that ate the rat

The Proper sequence should be:

(A) PSQR

(B) PSRQ

(C) QPRS

(D) QRPS

35. Select the pair which has the same relationship.

HOPE:ASPIRES

(A) Love: Elevates

(B) Film: Flam

(C) Fib: Lie

(D) Fake: Ordinary

36. What is the value of x in the exponential equation  $[9 + e^{(2x-4)}] = 10$

(A) 2

(B) 3

(C) 4

(D) 5

37. Who among the following was the president of the British Indian Association that was founded in 1851?

(A) Radhakant Deb

(B) Debendranath Tagore

(C) Prasanna Kumar

(D) Dwarakanath Tagore

38. RBI declined which Bank's proposal to name change after its merger with LIC?

(A) Dena Bank

(B) IDBI Bank

(C) IndusInd Bank

(D) Karur Vyasa Bank

39. The app 'Shiksha Vani' has been launched by

(A) CBSE

(B) WBBSE

(C) NCERT

(D) AIMA

40. What is Kerogen oil?

(A) Its an unconventional oil produced from the pyrolysis, hydrogenation, or thermal dissolution of Oil Shales

(B) Its a light crude oil contained in petroleum-bearing formations of shales

(C) Its an unconventional oil produced from the pyrolysis, hydrogenation, or thermal dissolution of environmental wastes

(D) It's a new form of vegetable oil prepared artificially in laboratory

41. Rare gases are

(A) mono atomic

(B) di atomic

(C) tri atomic

(D) None of above

42. The difference of the squares of two consecutive even integers is divisible by which of the following numbers?

(A) 3

(B) 4

(C) 5

(D) 6

43. Eris and Ceres are two members of our solar system. They are

(A) Moons

(B) Asteroids

(C) Meteoroid

(D) Dwarf Planet

44. When is the World Haemophilia Day observed?

(A) April 17

(B) March 17

(C) January 17

(D) December 17

45. Which acid is present in lemon?

(A) Marlic acid

(B) Citric acid

(C) Lactic acid

(D) Tartaric acid

46. Who institutes the World Summit on the Information Society (WSIS) awards?

(A) World Health Organization

(B) European Union

(C) United Nations

(D) ASEAN

47. Which of the following are the example(s) of terrestrial planet?

(A) Jupiter

(B) Saturn

(C) Venus

(D) Neptune

48. Who is the author of the book 'We are Displaced'?

(A) Jhumpa Lahiri

(B) Ruskin Bond

(C) Malala Yousafzai

(D) Chetan Bhagat



49. Who became the first Indian player to score 8000 runs in T20?

(A) M.S.Dhoni

(B) Virat Kohli

(C) Suresh Raina

(D) Rohit Sharma

50. In the equation,  $f(X) = a + b \cdot \log(X)$ , where  $a, b$  are constants, the relation between  $f(X)$  and  $\log(X)$  is

(A) Parabolic

(B) Linear

(C) Non-linear

(D) Circular