

COMMON ENTRANCE TEST FOR PG ADMISSION - 2018

Question Booklet No. **2215770**

Full Marks : 50

Subject: **GEOGRAPHY**

Question Booklet Series: **D**

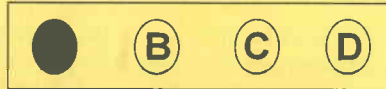
Subject Code No.: **22**

Answer all the questions. Each question has the same weightage.

Read the following instructions carefully before you start answering.

INSTRUCTIONS

1. The question Booklet is printed in four Series e.g. (A), (B), (C) and (D). The candidate has to indicate the Series of the question booklet in the space provided in the OMR Answer Sheet. For example, if the candidate gets Series (A) booklet, he / she has to indicate on the front side of the OMR Answer Sheet with Black ink ball point pen only as indicated below:



2. There are 50 questions inside this question booklet. Immediately after you have been instructed to open this question booklet, ensure that any page / question is not missing / not printed / torn / repeated. In case you find any defect anywhere in the question booklet, immediately get it replaced by the Invigilator.
3. Write your Form No and put signature in the space provided.
4. Before answering, write down the necessary information on the OMR Answer Sheet as per your Application Form and Admit Card in the specific space provided.
5. With each question you will find 4 possible answers marked by the letters A, B, C & D. Read each question carefully and find out which answer, according to you, is correct / most appropriate / best. Indicate your answer by darkening the appropriate circle completely in the OMR Answer Sheet corresponding to the question. For marking answers, use black ink ball pen only. If 'B' is the correct answer in a case, mark as below:



6. Do not fold or make any stray marks on the OMR Answer Sheet.
7. You can use the blank space of the last page for rough work. Do not tear it off from the Question Booklet.
8. After the examination has been over, you must submit OMR Answer Sheet to the Invigilator.
9. OMR Answer Sheet is designed for computer evaluation. If you do not follow the instructions given above and shown in the OMR Answer Sheet, it may make evaluation by computer difficult. Any resultant loss to the candidate on the above account shall be of the candidate only.
10. No candidate shall be allowed to use Mobile phone. Log tables or Calculator of any description in the examination hall / room.

1. What is the name of a species that is highly connected to the entire food web and whose loss may result in ecosystem collapse?
 (A) Limiting species (B) Vital species (C) Top species (D) Keystone species
2. The area between two parallels in polar zenithal stereographic projection is
 (A) $\pi R^2 \tan(\theta_2 - \theta_1)$ (B) $\pi R^2 \cot(\theta_2 - \theta_1)$ (C) $\pi R^2 \sin(\theta_2 - \theta_1)$ (D) $\pi R^2 \cos(\theta_2 - \theta_1)$
3. In cylindrical equal area projection what will be the area between equator and any parallel?
 (A) $2\pi R \sin\theta$ (B) $2\pi R^2 \sin\theta$ (C) $2\pi R \cos\theta$ (D) $2\pi R^2 \cos\theta$
4. The New Zealanders are known as:
 (A) Sams (B) Kiwis (C) Ashes (D) None of these
5. Which thermometer is used to indicate the lowest temperature?
 (A) Clinical thermometer (B) Alcohol thermometer
 (C) Resistance thermometer (D) Liquid thermometer
6. Coral bleaching resulted from
 (A) Acidification of sea water and SST (B) Suspension load of the Sea water
 (C) Surface runoff from the forest fringed coasts (D) Transparencies of the sea water
7. Nutritional eutrophication can cause bloom in which of the following populations?
 (A) River reeds (B) Salmon (C) Phytoplankton (D) Water fleas
8. Hydroponics is concerned with
 (A) Cultivation of plants by placing the roots in liquid nutrient solution rather than in soil
 (B) Science of water measurements of the earth with special reference to their use for navigation
 (C) The study of water with reference to its occurrence properties in the hydrosphere and atmosphere
 (D) None of the above
9. According to 2011 census, proportion of urban population in India is
 (A) 27.25 (B) 31.16 (C) 35.78 (D) 41.34
10. Katabatic winds blow –
 (A) From higher to lower region (B) From lower to higher region
 (C) From equator to the polar region (D) None of these
11. Match the following
- | | |
|-----------------------|---------------|
| a) Beas Project | 1. Krishna |
| b) Nagarjunasagar Dam | 2. Godavari |
| c) Ukai Project | 3. Bhagirathi |
| d) Poochampad Project | 4. Tapti |
| e) Tehri Project | 5. Pong Dam |
- | | | | | | |
|-----|---|---|---|---|---|
| (A) | a | b | c | d | e |
| (B) | 4 | 1 | 5 | 2 | 3 |
| (C) | 5 | 1 | 4 | 2 | 3 |
| (D) | 5 | 1 | 2 | 4 | 3 |
| (E) | 1 | 4 | 3 | 2 | 5 |
12. Hanging wall side move up in
 (A) Reverse fault (B) Normal fault (C) Strike-slip fault (D) Radial fault
13. The geosynclines which are generally found along the marginal areas of the ocean, are called –
 (A) Inter-continental geosynclines (B) Circum-continental geosynclines
 (C) Circum-oceanic geosynclines (D) None of these
14. In which state of India highest literacy rate is found in 2011 census?
 (A) Kerala (B) Mizoram (C) Tripura (D) Goa

15. Green revolution was made possible due to:
 (A) High yielding hybrid seeds (B) Adequate financial assistance to farmers
 (C) Check on soil erosion (D) Abundant rainfall
16. Etch plain is developed by
 (A) Differential weathering (B) Stage wise stripping of regolith
 (C) Fluvial erosion (D) Periglacial erosion
17. Line joining maximum curvature of a fold is
 (A) Crest (B) Strike (C) Hinge (D) Limb
18. Which of the following pyroclasts has smallest dimension
 (A) Volcanic Bomb (B) Volcanic Ash (C) Lapilli (D) Volcanic Dust
19. Why are cations attracted to clay minerals?
 (A) Because of the temperature gradients (B) Because clay minerals are the largest soil particles
 (C) Because of electrostatic attractions (D) Because no other minerals will bond with cations
20. What is the diameter of any parallel from pole of any hemisphere in polar zenithal stereographic projection
 (A) $R \tan(90-\theta)$ (B) $R \cot(90-\theta)$ (C) $2R \tan(90-\theta)$ (D) $2R \cot(90-\theta)$
21. The average salinity of the Indian ocean is
 (A) 32% (ppt) (B) 37% (ppt) (C) 35% (ppt) (D) 30% (ppt)
22. Why is the Delta of the Indus small compared to the Delta of the Ganga?
 (A) The Indus transverse a shorter distance than the Ganga
 (B) The Indus is not as broad as the Ganga
 (C) The path of the Indus is through arid area, while the Ganga collects more water along its path to the sea
 (D) None of these
23. Half-life of Carbon 14 is
 (A) 5770 years (B) 5870 years (C) 6770 years (D) 8770 years
24. Which of the following statements regarding the natural vegetation are true?
 (A) The high rainfall areas have the dense tropical forest
 (B) The moderate rainfall areas have the monsoon forest
 (C) The low rainfall areas have temperate grasslands
 (D) All of the above
25. Which of the following philosophy is not associated to a distinct paradigm in Geography
 (A) Determinism (B) Possibilism (C) Regionalism (D) Positivism
26. In simple conical one standard parallel projection the distance and angle between any two point are
 (A) increasing as we move from standard parallel (B) decreasing as we move from standard parallel
 (C) remain same at the standard parallel (D) both (A) and (C)
27. What features would you expect to find along the boundary of divergent plates?
 (A) High continental mountain and deep sea trenches (B) Two or more continental mountain range
 (C) Continental volcanic action and earthquakes (D) Deep submarine valleys and molten basalt
28. What is the height of any parallel from the equator?
 (A) $R \cos\theta$ (B) $R \tan\theta$ (C) $R \sin\theta$ (D) $R \cot\theta$
29. A broad valley is most likely to contain
 (A) Rapids
 (B) a floodplain
 (C) a floodplain and meandering stream
 (D) A floodplain, a meandering stream and a dendritic drainage pattern.

30. Farakka Barrage was built to check:
 (A) Water flowing into Bangladesh (B) Silting Calcutta port
 (C) Erosion of Calcutta port (D) All of these
31. Radial drainage pattern generally associated with
 (A) Volcanic cone (B) Folded structure (C) Faulted structure (D) All of them
32. Ionosphere is located at
 (A) An altitude ranges from 80 km to 400 km (B) An altitude ranges from 40 km to 200 km
 (C) An altitude ranges from 60 km to 300 km (D) None of these
33. What is the heat budget of the atmosphere?
 (A) 51% (B) 65% (C) 48% (D) 34%
34. The rocks in the Himalayan system mainly:
 (A) Sedimentary (B) Igneous (C) Plutonic (D) None of these
35. Which of the following river divide Aravalli ranges?
 (A) Narmada and Tapi (B) Banas and Luni (C) Narmada and Sone (D) Betwa and Koina
36. Which of the following deposits is not formed largely by chemical process
 (A) Evaporite (B) Phosphorous deposit (C) Chert (D) Coal
37. If the correlation between two variable is 0.5, then, both of the two variables share their variances at
 (A) < 50% (B) >50% (C) 50% (D) No sharing at all.
38. Evidence to support the idea of continental drift includes
 (A) The existence of ancient mountain ranges
 (B) Extensive Paleozoic glacial deposits in areas which today could not support such glaciation
 (C) Extensive glaciation which occurred 15000 years ago
 (D) The absence of marine fossils in certain localities
39. At a waterhole in the African Savanna, herbivores and other vulnerable species need to wait until carnivores have drunk their fill and moved away; eventually they will be able to drink at the same waterhole. What kind of ecological behaviour does this describe?
 (A) k strategies (B) r strategies
 (C) Intra-specific competition (D) Inter-specific competition
40. Earth's core is mostly made of Ni and Fe because
 (A) They are heavier than other elements
 (B) They are agglomerated through centripetal force at the core when earth was formed
 (C) They supposed to work as the earth's core engine
 (D) None of the above
41. Entropy, the measure of degree of maximum disorder, achieves at the
 (A) Beginning stage of fluvial erosion (B) Middle stage of the fluvial erosion
 (C) Lower middle stage of fluvial erosion (D) Last or final stage of fluvial erosion
42. New crust is created along
 (A) Mid oceanic ridge (B) Oceanic trench (C) Island arcs (D) Beni-off zone
43. Peneplain is characterized by
 (A) Low featureless plain (B) Planation surface
 (C) Low availability of energy (D) All the above
44. Which one of the following systems uses the vector and raster data?
 (A) Remote sensing system (B) Geographical information system
 (C) Global Positioning system (D) Both (A) and (B)

45. If the hypsometric integral of relief reaches the value of 0.69, it indicate
(A) A mature stage (B) A youthful stage (C) A old stage (D) A semi mature stage
46. Which of the following is not the landforms of glaciers?
(A) Tarn (B) Nunatak (C) Crag and tail (D) Burkhans
47. Base Flow of the stream is mainly contributed from
(A) Rainfall (B) Sub-surface flow
(C) Inter- basin Water Transfer (D) Surface flow
48. Which of the following is NOT a characteristic of k-selected strategies?
(A) Long-lived (B) Population stabilizes near a capacity level
(C) Care for their offspring (D) Small body size
49. South equatorial current of Indian Ocean is following parallel to the equator from
(A) East to west (B) West to East (C) East to South-west (D) West to North-east
50. A broad transition between two different ecosystem of mainly plant communities is called –
(A) Biomes (B) Sere (C) Eco clines (D) Habitat