

COMMON ENTRANCE TEST FOR PG ADMISSION, 2019

Question Booklet No. **4020171**

Full Marks : 200

Subject: **MLISC**

Question Booklet Series: **A**

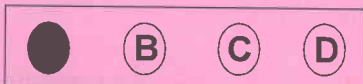
Subject Code No.: **40**

Answer all the questions. Each question has the same weightage.

Read the following instructions carefully before you start answering.

INSTRUCTIONS

1. The question Booklet is printed in four Series e.g. (A), (B), (C) and (D). The candidate has to indicate the Series of the question booklet in the space provided in the OMR Answer Sheet . For example, if the candidate gets Series (A) booklet, he / she has to indicate on the front side of the OMR Answer Sheet with Black ink ball point pen only as indicated below:



2. There are 50 questions inside this question booklet. Immediately after you have been instructed to open this question booklet, ensure that any page / question is not missing / not printed / torn /repeated. In case you find any defect anywhere in the question booklet, immediately get it replaced by the Invigilator.
3. Each question carries 4 marks. 1(one) mark will be deducted for each wrong answer(negative marking).
4. Write your Form No and put signature in the space provided.
5. Before answering, write down the necessary information on the OMR Answer Sheet as per your Application Form and Admit Card in the specific space provided.
6. With each question you will find 4 possible answers marked by the letters A, B, C & D. Read each question carefully and find out which answer, according to you, is correct / most appropriate / best. Indicate your answer by darkening the appropriate circle completely in the OMR Answer Sheet corresponding to the question. For marking answers, use black ink ball pen only. If 'B' is the correct answer in a case, mark as below:



7. Do not fold or make any stray marks on the OMR Answer Sheet.
8. You can use the blank space of the last page for rough work. Do not tear it off from the Question Booklet.
9. After the examination has been over, you must submit OMR Answer Sheet to the Invigilator.
10. OMR Answer Sheet is designed for computer evaluation. If you do not follow the instructions given above and shown in the OMR Answer Sheet, it may make evaluation by computer difficult. Any resultant loss to the candidate on the above account shall be of the candidate only.
11. No candidate shall be allowed to use Mobile phone. Log tables or Calculator of any description in the examination hall / room.

1. In 1974, Zurkowski used for the first time, which of the following term?
 (A) Digital Literacy (B) Media Literacy (C) Computer Literacy (D) Information Literacy
2. 'OCLC' was founded in the year:
 (A) 2001 (B) 2000 (C) 1967 (D) 1965
3. Name a technique used for searching sorted data in a database
 (A) Boolean Operator (B) Inverting file (C) Indexing (D) Binary
4. Index Translationum is a world bibliography of translations of:
 (A) Periodical articles (B) Books
 (C) Books and periodical articles (D) Patents
5. Sector Device is an extension of
 (A) Gap Device (B) Empty Device (C) Octave Device (D) Group Notation Device
6. The process of establishing headings and providing 'Cross references' is called
 (A) Access points (B) Headings (C) Authority Control (D) Bibliographic Records
7. Z39.50 is a standard for
 (A) Communication formats (B) Search and Retrieval services
 (C) Cataloguing Web resources (D) Library Management Services
8. RSS feed is a tool of
 (A) Web 2.0 (B) Web 1.0 (C) Web 3.0 (D) Graphic Design
9. Which of the following is not an alerting service?
 (A) CAS (B) SDI
 (C) Document Delivery Service (D) Electronic Clipping Service
10. Science Citation Index is published by
 (A) Clarivate Analytics (B) H.W. Wilson
 (C) Whitaker (D) R.R. Bowker
11. Arrange the following IFLA programmes according to their year of commencement:
 (i) UBC (ii) UAP
 (iii) ISBD (iv) International MARC Office
- Codes
 (A) (i), (iv), (iii), (ii) (B) (ii), (iv), (i), (iii) (C) (iv), (i), (ii), (iii) (D) (iii), (i), (ii), (iv)
12. Zero Based Budgeting means
 (A) Budgeting without funds (B) Budgeting afresh
 (C) Budgeting based on previous year's expenses (D) Performance budget
13. Search gives more information output:
 (A) Boolean 'AND' (B) Boolean 'OR' (C) Boolean 'NOT' (D) Phrase Search
14. The purposes of Metadata are
 i. Unique Identification ii. Authentication of records
 iii. Shelf arrangement iv. Shows the collection of a library
- Codes:
 (A) (i), (ii) are correct (B) (ii), (iii) are correct
 (C) (iii), (iv) are correct (D) (iv), (i) are correct
15. Which of the following does not belong to the set of canons for the characteristics?
 (A) Canon of Differentiation (B) Canon of Ascertainability
 (C) Canon of Currency (D) Canon of Relevance

26. Grey Literature means:

- (A) The literature published by a publisher named as "Grey Publisher"
- (B) The literature which is not published and is not available through normal book selling channels
- (C) The literature published and made available in Grey shades
- (D) The literature which is published and made available through special publishers

27. Pre-coordinate indexing system is followed in :

- (i) Chain Indexing (ii) POPSI (iii) UNITERM (iv) PRECIS

- (A) (i) and (iv) are correct
- (B) (i) (ii) and (iii) are correct
- (C) (i) (ii) and (iv) are correct
- (D) (ii) and (iv) are correct

28. Primary sources include:

- (i) Thesis (ii) Patent (iii) Abstracting Periodical (iv) Periodical article

- (A) (i), (ii) and (iii) are correct
- (B) (i), (iii) and (iv) are correct
- (C) (i), (ii) and (iv) are correct
- (D) (ii), (iii) and (iv) are correct

29. Match the following:

List-I

- (a) CCF
- (b) UNIMARC
- (c) DUBLIN CORE
- (d) USMARC

List-II

- (i) OCLC
- (ii) American Library Association
- (iii) Library of Congress
- (iv) Unesco
- (v) IFLA

Code:

	(a)	(b)	(c)	(d)
A.	(v)	(iv)	(i)	(iii)
B.	(iv)	(v)	(i)	(iii)
C.	(iii)	(v)	(iv)	(ii)
D.	(ii)	(iv)	(v)	(i)

30. Which principles are corollary to Wall picture principle ?

- (i) Cow-calf principle
- (ii) Principle of later-in-time
- (iii) Whole – organ principle
- (iv) Principal of literary warrant

Codes :

- (A) (i) and (ii) are correct
- (B) (ii) and (iii) are correct
- (C) (i) and (iii) are correct
- (D) (i) and (iv) are correct

31. Assertion (A) : Primary sources provide most authentic information for research.

Reason (R) : Primary sources are highly unorganised.

Codes :

- (A) (A) is false, but (R) is true
- (B) (A) is true, but (R) is false
- (C) Both (A) and (R) are correct and (R) is the correct explanation of (A)
- (D) Both (A) and (R) are correct, but (R) is not the correct explanation of (A)

32. Assertion (A) : "Name Authority File" should be used in a library.
Reason (R) : All works of an author should be collocated.
Codes :
(A) (A) is true, but (R) is false
(B) Both (A) and (R) true and (R) is the correct explanation of (A).
(C) (A) is false, but (R) is true
(D) Both (A) and (R) are false
33. As per Indian Copyright Law, copyright is granted for
(A) Fifty years after the book is published
(B) Fifty years after the death of the author
(C) Sixty years after the book is published
(D) Sixty years after the death of the author
34. Who coined the term POSDCORB?
(A) Henri Fayol (B) Max Weber (C) Gulick and Urwick (D) Wilson and Tauber
35. Corollary for Second Law of Library Science is
(A) Books for all (B) Free Books Service
(C) Free Library Service (D) Books are everywhere
36. The online version of 'McGraw Hill Encyclopaedia of Science and Technology' is
(A) Access Science (B) McGraw Hill Online
(C) Online Encyclopaedia of Science and Technology (D) Science online
37. 'Indian National Bibliography' is arranged under two parts, General Publication and _____ Publications.
(A) Private (B) Electronic (C) Governmental (D) Non-book
38. In Table 6 of Dewey Decimal Classification Scheme, the 'Language' subdivision is manifested as
(A) Common isolate (B) Main class (C) Special isolate (D) Form isolate
39. Which national agency in India is assigning the ISBN?
(A) Raja Ram Mohan Roy National Education Resource Centre
(B) Delhi Public Library
(C) Federation of Publishers in India
(D) National Library of India
40. Which of the following is not an alerting service ?
(A) CAS (B) SDI
(C) Document Delivery Service (D) Newspaper Clipping Service
41. Arrange the following in decreasing order according to DDC numbers :
(i) Indian Classical Music
(ii) Dentistry
(iii) Macroeconomics
(iv) Criminology
- Codes :**
(A) (iv), (iii), (ii), (i) (B) (iv), (i), (ii), (iii) (C) (iii), (i), (iv), (ii) (D) (i), (ii), (iv), (iii)
42. The standard size of a catalogue card is
(A) 12.5 cm X 7.5 cm (B) 12 cm X 7 cm (C) 11 cm X 5 cm (D) 10 cm X 4 cm
43. ISBN changed from 10 digits to 13 from
(A) January, 2007 (B) January, 2008 (C) January, 2006 (D) January, 2005
44. Which of the following is a Library Management Software?
(A) LibSys 7 (B) EPrints (C) Joomla (D) Drupal

45. Which of the following is an Open Source Software?
(A) E-Granthalaya (B) SOUL 2.0 (C) Koha (D) LibSys 7
46. First generation computer used
(A) Microprocessor
(B) Transistors
(C) Integrated circuits
(D) Thermionic valves or vacuum tube or electronic valves
47. _____ is an important record of books, which shows the position of any book on the shelves.
(A) Reader's Guide (B) Authority File (C) Accession Register (D) Shelf List
48. Which of the following gates would output 1 when one input is 1 and other input is 0?
(A) OR gate (B) AND gate (C) NAND gate (D) both (A) and (C)
49. The structure or format of data is called
(A) Syntax (B) Semantics
(C) Struct (D) None of the above
50. Which of the following are Web-zine?
(i) Email Magazine
(ii) E-Conference
(iii) Online Bulletin
(iv) Electronic News Letter
- Codes:
(A) (i), (iii) and (iv) (B) (i), (ii) and (iii) (C) (ii), (iii) and (iv) (D) (i), (ii) and (iv)