

VIDYASAGAR UNIVERSITY
MIDNAPORE

COMMON ENTRANCE TEST FOR PG ADMISSION, 2019

Question Booklet No. **1313551**

Full Marks : 200

Subject: **SANTALI**

Question Booklet Series: **A**

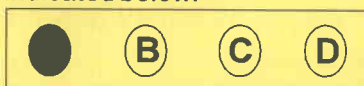
Subject Code No.: **13**

Answer all the questions. Each question has the same weightage.

Read the following instructions carefully before you start answering.

INSTRUCTIONS

1. The question Booklet is printed in four Series e.g. (A), (B), (C) and (D). The candidate has to indicate the Series of the question booklet in the space provided in the OMR Answer Sheet . For example, if the candidate gets Series (A) booklet, he / she has to indicate on the front side of the OMR Answer Sheet with Black ink ball point pen only as indicated below:



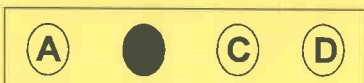
2. There are 50 questions inside this question booklet. Immediately after you have been instructed to open this question booklet, ensure that any page / question is not missing / not printed / torn /repeated. In case you find any defect anywhere in the question booklet, immediately get it replaced by the Invigilator.

3. Each question carries 4 marks. 1(one) mark will be deducted for each wrong answer(negative marking).

4. Write your Form No and put signature in the space provided.

5. Before answering, write down the necessary information on the OMR Answer Sheet as per your Application Form and Admit Card in the specific space provided.

6. With each question you will find 4 possible answers marked by the letters A, B, C & D. Read each question carefully and find out which answer, according to you, is correct / most appropriate / best. Indicate your answer by darkening the appropriate circle completely in the OMR Answer Sheet corresponding to the question. For marking answers, use black ink ball pen only. If 'B' is the correct answer in a case, mark as below:



7. Do not fold or make any stray marks on the OMR Answer Sheet.

8. You can use the blank space of the last page for rough work. Do not tear it off from the Question Booklet.

9. After the examination has been over, you must submit OMR Answer Sheet to the Invigilator.

10. OMR Answer Sheet is designed for computer evaluation. If you do not follow the instructions given above and shown in the OMR Answer Sheet, it may make evaluation by computer difficult. Any resultant loss to the candidate on the above account shall be of the candidate only.

11. No candidate shall be allowed to use Mobile phone. Log tables or Calculator of any description in the examination hall / room.

1. 'ପ୍ରକାଶନର ଉପରେ ଉପଲବ୍ଧ ସମସ୍ତ ସୂଚନାକୁ ବ୍ୟବହାର କରି' ଉପରେ କିପରି ଉପଲବ୍ଧ ହେବ ? ଉପଲବ୍ଧ ହେବ ଉପରେ ଉପଲବ୍ଧ ହେବ ?

- (A) ଉପଲବ୍ଧ ହେବ ଉପଲବ୍ଧ ହେବ (B) ଉପଲବ୍ଧ ହେବ ଉପଲବ୍ଧ ହେବ
(C) ଉପଲବ୍ଧ ହେବ ଉପଲବ୍ଧ ହେବ (D) ଉପଲବ୍ଧ ହେବ ଉପଲବ୍ଧ ହେବ

'ହଟରାୟ ଦେଶ ମାଝି ରେୟାଃ କାଥା' - ପୁସ୍ତିକ ଦି ଅକସ୍ ଅନଲିସିସ୍ ବାଂଘା ପୀରସି ତେ ତରଜମା ଆକାଦାୟ ?

- (A) ପରିମଳ ହେମବ୍ରମ (B) ସିରେନ୍ଦ୍ରନାଥ ବାଙ୍କେ (C) ରାବନ ବାଙ୍କେ (D) ଡ. କୃଷ୍ଣଚନ୍ଦ୍ର ଟୁଡୁ

2. 'ଫାକ୍ଟରାୟ ଉପରେ' ଉପଲବ୍ଧ ହେବ ଉପଲବ୍ଧ ହେବ ଉପଲବ୍ଧ ହେବ ଉପଲବ୍ଧ ହେବ ?

- (A) ଉପଲବ୍ଧ ହେବ ଉପଲବ୍ଧ ହେବ (B) ଉପଲବ୍ଧ ହେବ ଉପଲବ୍ଧ ହେବ
(C) ଉପଲବ୍ଧ ହେବ ଉପଲବ୍ଧ ହେବ (D) ଉପଲବ୍ଧ ହେବ ଉପଲବ୍ଧ ହେବ

'ଫାକ୍ଟରାୟ' ପାଠ୍ୟପୁସ୍ତକ ଦି ଅକା ମିଶନ ପ୍ରେସ୍ ଖନ ଛାପାଃ କାନ ତାହେଁ କାନା ?

- (A) ପୋଖୁରିୟା ମିଶନ (B) ଜଞ୍ଜେଶ୍ୱର ମିଶନ
(C) ବେନାଗାଡ଼ିୟା ମିଶନ (D) ଭୈମପୁର ମିଶନ

3. 2020 ଉପରେ ଉପଲବ୍ଧ ହେବ ଉପଲବ୍ଧ ହେବ ଉପଲବ୍ଧ ହେବ ?

- (A) ପ୍ରଥମ ଉପରେ (B) ଦ୍ୱିତୀୟ ଉପରେ (C) ତୃତୀୟ ଉପରେ (D) ଚତୁର୍ଥ ଉପରେ

2020 ସାଲ ରେୟାଃ ଓଲିମ୍ପିକ୍ ଖେଳଦି ଦି ଅକା ଦିଶମ ରେ ହେବୁ ଆ ?

- (A) ଲଣ୍ଡନ ରେ (B) ଜାପାନ ରେ (C) ଆମେରିକା ରେ (D) ଚୀନ ରେ

4. ଉପଲବ୍ଧ ହେବ ଉପଲବ୍ଧ ହେବ University ରେ ଉପଲବ୍ଧ ହେବ ଉପଲବ୍ଧ ହେବ M.A. ଉପଲବ୍ଧ ହେବ ଉପଲବ୍ଧ ହେବ ?

- (A) Ranchi University (B) Viswa-Bharati University
(C) Sido - Kanhu - Murmu University (D) Vidyasagar University

ଭାରତ ରେୟାଃ ଅକା University ରେ ପୁସ୍ତକ ସାନତାଡ଼ି ତେ M.A. ପାଠ୍ୟପୁସ୍ତକ ଏହା ଲେନା ?

- (A) Ranchi University (B) Viswa-Bharati University
(C) Sido - Kanhu - Murmu University (D) Vidyasagar University

5. ଉପଲବ୍ଧ ହେବ ଉପଲବ୍ଧ ହେବ ଉପଲବ୍ଧ ହେବ -

- (A) ଉପଲବ୍ଧ ହେବ - ଉପଲବ୍ଧ ହେବ (B) ଉପଲବ୍ଧ ହେବ - ଉପଲବ୍ଧ ହେବ
(C) ଉପଲବ୍ଧ ହେବ - ଉପଲବ୍ଧ ହେବ (D) ଉପଲବ୍ଧ ହେବ - ଉପଲବ୍ଧ ହେବ

ନଂୟା କି ମୁଦି ରେ ଅକାଟାଃ ସୀରିୟା -

- (A) ମୁରମୁ - ସିମି ଗାଡ଼ି (B) ହାଁସଦା - ଚାମ୍ପା ଗାଡ଼ି
(C) ହେମବ୍ରମ - ଖାୟରି ଗାଡ଼ି (D) କିସ୍କୁ - ବାଦାଲି ଗାଡ଼ି

6. ଉପଲବ୍ଧ ହେବ ଉପଲବ୍ଧ ହେବ 'ଉପଲବ୍ଧ ହେବ' ଉପଲବ୍ଧ ହେବ ଉପଲବ୍ଧ ହେବ ଉପଲବ୍ଧ ହେବ ?

- (A) 2005 (B) 2003 (C) 2002 (D) 2001

ସଦୁମିନି ବେସରା ଆଃ 'ଭାବନା' ଅନାଡ଼ିହେଁ ପୁସ୍ତିକ ଦି ତିନିଃ ସାଲ ରେ ପାରସାଲ ଲେନା ?

- (A) 2005 (B) 2003 (C) 2002 (D) 2001

7. ଉପଲବ୍ଧ ହେବ ଉପଲବ୍ଧ ହେବ ଉପଲବ୍ଧ ହେବ ଉପଲବ୍ଧ ହେବ ?

- (A) ଉପଲବ୍ଧ ହେବ (B) ଉପଲବ୍ଧ ହେବ (C) ଉପଲବ୍ଧ ହେବ (D) ଉପଲବ୍ଧ ହେବ

ଅକା ପୀରସି ଦି ଅସ୍ତିତ୍ୱିକ୍ ପୀରସି ଖୁସାଟି ଆଂତାରେ ବାଂଘି ହିଜୁଃ ଆ ?

- (A) ବେଦିୟା (B) ଭୂମିଜ (C) ବିରହଡ଼ି (D) ସାନତାଲି

29. 'ଘଣ୍ଟା, ଘଣ୍ଟା, ଘଣ୍ଟା' ପ୍ରକଳ୍ପର ପ୍ରକଳ୍ପକାରୀ କିଏ ?
 (A) 1955 (B) 1965 (C) 1963 (D) 1967
- 'ହାରିୟାଡ଼ି ସାକାମ' ପାଖାମି ଦିନେ କେଉଁ ବର୍ଷରେ ଉତ୍ପାଦିତ ହେଲା ?
 (A) 1955 (B) 1965 (C) 1963 (D) 1967
30. 2018 ପ୍ରକଳ୍ପର ପ୍ରକଳ୍ପକାରୀ ପ୍ରକଳ୍ପକାରୀ ପ୍ରକଳ୍ପକାରୀ ପ୍ରକଳ୍ପକାରୀ ପ୍ରକଳ୍ପକାରୀ ?
 (A) ପ୍ରକଳ୍ପକାରୀ ପ୍ରକଳ୍ପକାରୀ ପ୍ରକଳ୍ପକାରୀ
 (B) ପ୍ରକଳ୍ପକାରୀ ପ୍ରକଳ୍ପକାରୀ ପ୍ରକଳ୍ପକାରୀ
 (C) ପ୍ରକଳ୍ପକାରୀ ପ୍ରକଳ୍ପକାରୀ ପ୍ରକଳ୍ପକାରୀ
 (D) ପ୍ରକଳ୍ପକାରୀ ପ୍ରକଳ୍ପକାରୀ ପ୍ରକଳ୍ପକାରୀ
- 2018 ରେ ସାନତାଡ଼ି ସାକାମ ଲାଗିତେ ଅକ୍ଷୟ ପଦ୍ମଶ୍ରୀ ସିରପୀ ଏକାମ ଆକାଦା ?
 (A) ପ୍ରକଳ୍ପକାରୀ ମୁରମୁ (B) ପ୍ରକଳ୍ପକାରୀ ଦିଗନ୍ତର ହାଁସଦା
 (C) ପ୍ରକଳ୍ପକାରୀ କାମୁ ମାସି (D) ପ୍ରକଳ୍ପକାରୀ କିଶୋରି ମୋହନ ହାଁସଦା
31. ପ୍ରକଳ୍ପକାରୀ ପ୍ରକଳ୍ପକାରୀ ପ୍ରକଳ୍ପକାରୀ ପ୍ରକଳ୍ପକାରୀ ?
 (A) ପ୍ରକଳ୍ପକାରୀ ପ୍ରକଳ୍ପକାରୀ (B) ପ୍ରକଳ୍ପକାରୀ ପ୍ରକଳ୍ପକାରୀ
 (C) ପ୍ରକଳ୍ପକାରୀ ପ୍ରକଳ୍ପକାରୀ (D) ପ୍ରକଳ୍ପକାରୀ ପ୍ରକଳ୍ପକାରୀ
- ପ୍ରକଳ୍ପକାରୀ ପ୍ରକଳ୍ପକାରୀ ପ୍ରକଳ୍ପକାରୀ ?
 (A) ପ୍ରକଳ୍ପକାରୀ (B) ପ୍ରକଳ୍ପକାରୀ
 (C) ପ୍ରକଳ୍ପକାରୀ (D) ପ୍ରକଳ୍ପକାରୀ
32. ପ୍ରକଳ୍ପକାରୀ ପ୍ରକଳ୍ପକାରୀ ପ୍ରକଳ୍ପକାରୀ ?
 (A) ପ୍ରକଳ୍ପକାରୀ (B) ପ୍ରକଳ୍ପକାରୀ (C) ପ୍ରକଳ୍ପକାରୀ (D) ପ୍ରକଳ୍ପକାରୀ
- ସାକାମ ଲାଗିତେ କେଉଁ ବର୍ଷରେ ଆକାମ ସିରଜନ ଲେନା ?
 (A) ପ୍ରକଳ୍ପକାରୀ (B) ପ୍ରକଳ୍ପକାରୀ (C) ପ୍ରକଳ୍ପକାରୀ (D) ପ୍ରକଳ୍ପକାରୀ
33. ପ୍ରକଳ୍ପକାରୀ ପ୍ରକଳ୍ପକାରୀ ପ୍ରକଳ୍ପକାରୀ ?
 (A) ପ୍ରକଳ୍ପକାରୀ (B) ପ୍ରକଳ୍ପକାରୀ (C) ପ୍ରକଳ୍ପକାରୀ (D) ପ୍ରକଳ୍ପକାରୀ
- ଆକାମ ଲାଗିତେ କେଉଁ ବର୍ଷରେ ଆକାମ ଲେନା ?
 (A) ପ୍ରକଳ୍ପକାରୀ (B) ପ୍ରକଳ୍ପକାରୀ (C) ପ୍ରକଳ୍ପକାରୀ (D) ପ୍ରକଳ୍ପକାରୀ
34. ପ୍ରକଳ୍ପକାରୀ ପ୍ରକଳ୍ପକାରୀ ପ୍ରକଳ୍ପକାରୀ ?
 (A) 7 (B) 9 (C) 8 (D) 6
- ସାନତାଡ଼ି ରେ ଆକାମ ସିରଜନ ଲେନା ?
 (A) 7 (B) 9 (C) 8 (D) 6
35. ପ୍ରକଳ୍ପକାରୀ ପ୍ରକଳ୍ପକାରୀ ପ୍ରକଳ୍ପକାରୀ ?
 (A) ପ୍ରକଳ୍ପକାରୀ (B) ପ୍ରକଳ୍ପକାରୀ (C) ପ୍ରକଳ୍ପକାରୀ (D) ପ୍ରକଳ୍ପକାରୀ
- ପ୍ରକଳ୍ପକାରୀ ପ୍ରକଳ୍ପକାରୀ ପ୍ରକଳ୍ପକାରୀ ?
 (A) କାମୁ ମୁରମୁ (B) କାମୁ ମୁରମୁ (C) କାମୁ ମୁରମୁ (D) କାମୁ ମୁରମୁ
36. ପ୍ରକଳ୍ପକାରୀ ପ୍ରକଳ୍ପକାରୀ ପ୍ରକଳ୍ପକାରୀ ?
 (A) 7 (B) 9 (C) 8 (D) 6
- ସାନତାଡ଼ି ପ୍ରକଳ୍ପକାରୀ ପ୍ରକଳ୍ପକାରୀ ପ୍ରକଳ୍ପକାରୀ ?
 (A) 7 (B) 9 (C) 8 (D) 6

44. 'bch,pbch, ch,sh,th'- কথ শব্দসমূহের মধ্যে কোনটি সঠিক?

- (A) bch,pbch, ch,sh,th
(C) ch,sh,th

- (B) ch,sh,th,ph,th
(D) ch,sh,th,ph,th

'কীলকী উঠাও' - দ অকারে ছয়টি আ ?

- (A) সৈদরা বির রে
(C) আখড়া রে

- (B) পাতা টাডি রে
(D) কীলকীপুর অীতু রে

45. 'গোপনীয়তা' - গুণগণিতের ক্ষেত্রে গুণনীয়ক এবং গুণ্যের মধ্যে গুণনীয়ক বহুত্বের ক্ষেত্রে বহুত্বের?

- (A) গুণনীয়ক বহুত্বের
(C) গুণ্যের বহুত্বের

- (B) গুণনীয়ক বহুত্বের
(D) গুণ্যের বহুত্বের

'গালমারাও' - পাথাম রেন পুয়ল সা-সাপাড়াওয়িচ্ দ অকয় তাঁহে কানায় ?

- (A) পরিমল হেমব্রম
(C) মার্শাল হেমব্রম

- (B) কলেন্দ্রনাথ মৌন্ডি
(D) যীরেন্দ্রনাথ বাক্সে

46. 'গুণনীয়ক' - গুণনীয়ক এবং গুণ্যের মধ্যে গুণনীয়ক বহুত্বের?

- (A) গুণনীয়ক বহুত্বের
(C) গুণ্যের বহুত্বের

- (B) গুণনীয়ক বহুত্বের
(D) গুণ্যের বহুত্বের

'বাহা ডালওয়াঃ' - গামাম পুথি দ অকয়ে অল আকাদা ?

- (A) পাউল জুবীর সরেন
(C) বালকিশোর বাক্সে

- (B) পাস্টার কে. কিস্কু
(D) যোসেফ হাঁসদা

47. 'গুণনীয়ক' - গুণনীয়ক এবং গুণ্যের মধ্যে গুণনীয়ক বহুত্বের?

- (A) গুণনীয়ক বহুত্বের
(C) গুণ্যের বহুত্বের

- (B) গুণনীয়ক বহুত্বের
(D) গুণ্যের বহুত্বের

যদুনাথ টুডু অলাঃ অকা গায়ান পুথি বাং কানা ?

- (A) খেরওয়ার সীওতা
(C) সুতান টাডি

- (B) জুরি খীতির
(D) সিরিজালা

48. 'গুণনীয়ক' - গুণনীয়ক এবং গুণ্যের মধ্যে গুণনীয়ক বহুত্বের?

- (A) 1872

- (B) 1873

- (C) 1880

- (D) 1870

'বেনাগীড়িয়া সেরেঞ পুথি' - পুয়ল তে তিনীঃ সাল রে ছাপা পারসাল লেনা ?

- (A) 1872

- (B) 1873

- (C) 1880

- (D) 1870

49. 'গুণনীয়ক' - গুণনীয়ক এবং গুণ্যের মধ্যে গুণনীয়ক বহুত্বের?

- (A) গুণনীয়ক বহুত্বের

- (B) গুণ্যের বহুত্বের

- (C) গুণনীয়ক বহুত্বের

- (D) গুণ্যের বহুত্বের

'মুহিলা চেচেং দীয় - গামাম পুথি দ অকয় গামামিয়া আঃ অল কানা ?

- (A) রবিলাল মুরমু

- (B) হসদেব কিস্কু

- (C) নুনকু সরেন

- (D) রাবন বাক্সে

50. 'গুণনীয়ক' - গুণনীয়ক এবং গুণ্যের মধ্যে গুণনীয়ক বহুত্বের?

- (A) গুণনীয়ক বহুত্বের

- (B) গুণ্যের বহুত্বের

- (C) গুণনীয়ক বহুত্বের

- (D) গুণ্যের বহুত্বের

পছিম বাংলা রে পুয়ল সানতালি তে B.A. ডিগ্রী অকয়ে হামেট আকাদা ?

- (A) ভীমচরন টুডু

- (B) জগৎপতি হাঁসদা

- (C) সুবল হাঁসদা

- (D) জিতেন্দ্র মোহন সরেন