

**VIDYASAGAR UNIVERSITY**  
**MIDNAPORE**

**COMMON ENTRANCE TEST FOR PG ADMISSION, 2019**

Question Booklet No. **1213412**

Full Marks : 200

Subject: **SOCIOLOGY**

Question Booklet Series: **D**

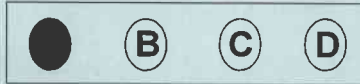
Subject Code No.: **12**

Answer all the questions. Each question has the same weightage.

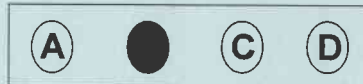
Read the following instructions carefully before you start answering.

**INSTRUCTIONS**

1. The question Booklet is printed in four Series e.g. (A), (B), (C) and (D). The candidate has to indicate the Series of the question booklet in the space provided in the OMR Answer Sheet . For example, if the candidate gets Series (A) booklet, he / she has to indicate on the front side of the OMR Answer Sheet with Black ink ball point pen only as indicated below:



2. There are 50 questions inside this question booklet. Immediately after you have been instructed to open this question booklet, ensure that any page / question is not missing / not printed / torn /repeated. In case you find any defect anywhere in the question booklet, immediately get it replaced by the Invigilator.
3. Each question carries 4 marks. 1(one) mark will be deducted for each wrong answer(negative marking).
4. Write your Form No and put signature in the space provided.
5. Before answering, write down the necessary information on the OMR Answer Sheet as per your Application Form and Admit Card in the specific space provided.
6. With each question you will find 4 possible answers marked by the letters A, B, C & D. Read each question carefully and find out which answer, according to you, is correct / most appropriate / best. Indicate your answer by darkening the appropriate circle completely in the OMR Answer Sheet corresponding to the question. For marking answers, use black ink ball pen only. If 'B' is the correct answer in a case, mark as below:



7. Do not fold or make any stray marks on the OMR Answer Sheet.
8. You can use the blank space of the last page for rough work. Do not tear it off from the Question Booklet.
9. After the examination has been over, you must submit OMR Answer Sheet to the Invigilator.
10. OMR Answer Sheet is designed for computer evaluation. If you do not follow the instructions given above and shown in the OMR Answer Sheet, it may make evaluation by computer difficult. Any resultant loss to the candidate on the above account shall be of the candidate only.
11. No candidate shall be allowed to use Mobile phone. Log tables or Calculator of any description in the examination hall / room.

1. Who among the following does not belong to French school of sociology  
 (A) Comte (B) Durkheim (C) Weber (D) Saint Simon
2. Sanskritization implies  
 (A) Change in caste structure (B) Change of caste structure  
 (C) Change for caste structure (D) None of the above
3. Which one of the following is not an indicator of cultural diversity in India?  
 (A) Race (B) Caste (C) Class (D) Religion
4. According to whom "Societies characterized by too much or too little regulation or integration will have high suicide rates"?  
 (A) Parsons (B) Weber (C) Durkheim (D) Merton
5. Privatization of Education is a consequence of which one of the following?  
 (A) Urbanization (B) Globalization  
 (C) Development of Science and Technology (D) Increase in Population
6. The word 'Verstehen' comes from .....  
 (A) Portuguese (B) German (C) French (D) Latin
7. Emile Durkheim defines society as:  
 (A) Community of ideas (B) Homogenous community  
 (C) Moral community (D) Ethical community
8. Which one of the following is an example of ascribed status?  
 (A) Teacher (B) Student (C) Brahmin (D) Doctor
9. Who among the following is the author of 'Mind, Self and Society'?  
 (A) Talcott Parsons (B) Margaret Mead (C) George H. Mead (D) Gardner Murphy
10. Who classified action in logical and non logical categories?  
 (A) Max Weber (B) T.Parsons (C) V.Pareto (D) G.H.Mead
11. Customs are also called  
 (A) Culture (B) Value (C) Folkways (D) Mores
12. 14. Who wrote the book 'Sociological Theories of Today' ?  
 (A) R.K. Merton (B) P.A. Sorokin (C) N.S. Timasheff (D) T. Parsons
13. Field study is related to  
 (A) Real life situations (B) Laboratory situations  
 (C) Experimental situation (D) None of these
14. The Functional theory of social stratification was expounded in the writings of :  
 (A) Davis & Black (B) Davis & Moore (C) Parsons & Bales (D) Wiser & Wiser
15. Which one of the following is known as the process by which cultural traits spread from one culturally distinct group to another?  
 (A) Evolution (B) Assimilation (C) Accommodation (D) Diffusion
16. The sociological perspective of marriage focuses on—  
 (A) System of roles  
 (B) Process of child rearing  
 (C) Rituals and ceremonies  
 (D) Sexual relationships between men and women

17. Which of the following aspects is the kingpin in the process of Sanskritisation ?  
 (A) Horizontal mobility (B) Vertical mobility  
 (C) Anticipatory socialization (D) Acculturation
18. Among the Indian sociologists, who has pleaded for an integrated approach to the study of social phenomenon ?  
 (A) D.P. Mukerji (B) G.S. Ghurye  
 (C) Radhakamal Mukherjee (D) Ramkrishna Mukherjee
19. Which of the following variables cannot be expressed in quantitative terms?  
 (A) Socio-economic Status (B) Marital Status  
 (C) Numerical Aptitude (D) Professional Attitude

20. Match List – I with List – II:

List – I

(Authors)

(a) S.C. Dube

(b) M.N. Srinivas

(c) G.S. Ghurye

(d) B.R. Ambedkar

List – II

(Books)

(i) India's Village

(ii) Caste and Race in India

(iii) Castes in India: Their Mechanism, Genesis and Development

(iv) Indian Village

Select the correct answer from the codes given below:

Codes:

(a) (b) (c) (d)

(A) (i) (ii) (iii) (iv)

(B) (iv) (i) (ii) (iii)

(C) (iv) (i) (iii) (ii)

(D) (i) (iv) (ii) (iii)

21. What is the purpose of exploratory research design?  
 (A) To develop hypothesis (B) To test hypothesis  
 (C) To establish causal connections (D) To test a theory
22. The Book "Folkways" was written in the year  
 (A) 1857 (B) 1906 (C) 1887 (D) 1916
23. Who used the phrase 'necessary conditions of existence' as an important component of social structure ?  
 (A) S.F. Nadel (B) C. Levi-Strauss  
 (C) A.R. Radcliffe-Brown (D) R.K. Merton
24. Who is the author the book "Deschooling Society"?  
 (A) Ivan Illich (B) L. Althusser  
 (C) F. D. Young (D) D. Lawton
25. Assimilation means—  
 (A) Exchange of cultural traits between two communities  
 (B) Dominance of one community over the other  
 (C) Two communities fighting with each other  
 (D) None of the above
26. The Weberian model of social stratification has been used in the study of caste by  
 (A) S.C. Dube (B) M.N. Srinivas (C) T.N. Madan (D) Andre Beteille
27. Marx studies 'society' in a  
 (A) Holistic way (B) conceptual way  
 (C) Methodological way (D) factual way.

28. According to whose argument "some conflict is functional because it serves as a safety valve, without which social hostility would eventually erupt violently"?
- (A) Coser (B) Marx (C) Dahrendorf (D) Gluckman
29. Which model of change suggests that change occurs through conflict and resolution?
- (A) Evolutional (B) Dialectic (C) Cyclical (D) Progressive
30. Who said to have articulated integration of 'agency and structure' in structuration theory?
- (A) Michael Foucault (B) J. Derrida (C) Anthony Giddens (D) J.M. Bernstein
31. The purpose of the survey is
- (A) In depth study of social phenomena (B) Extensive coverage of population  
(C) Testing of a theory (D) Establishing causal linkage
32. The final result of a study will be more accurate if the sample drawn is
- (A) Fixed by quota (B) Taken randomly  
(C) Representative to the population (D) Purposive way
33. Anne Sociologique was founded in 1898 by
- (A) Saint Simon (B) Thomas Hobbes (C) Herbert Spencer (D) Emile Durkheim
34. Merton has proposed his theory of role-set in his book
- (A) 'Social Theory and Social Structure' (B) 'Sociological Theories'  
(C) 'New Trends in Sociology' (D) 'Challenges Before Sociology'
35. Which book is considered to be the 'Bible of Sociology'?
- (A) 'Folkways' (B) 'Mind and Society'  
(C) 'Sociological Tradition' (D) 'Masters of Sociology'
36. To E. Durkheim, Moral density means:
- (A) Sheer increase in the number of individuals  
(B) Individuals working morally  
(C) Individuals feeling sobriety  
(D) Increased interaction between the individuals
37. Coefficient of correlation (r) indicates the extend of relationship between
- (A) Two qualitative variables  
(B) Two quantitative variables  
(C) One qualitative variable and other quantitative variable  
(D) All the above
38. The square of standard deviation is known as:
- (A) Co-efficient (B) Mean (C) Variance (D) Mode
39. Empirical knowledge essentially involves
- (A) Collection of information (B) Practice  
(C) Observation (D) Speculation
40. After data collection which is the correct sequence of the following steps?
- (A) Editing of filled in tool, coding, report writing, tabulation  
(B) Coding, report writing, editing the filled in tool, tabulation  
(C) Report writing, editing filled in tool, tabulation, coding  
(D) Editing filled in tool, coding, tabulation
41. Which one of the following is not an element of rural community?
- (A) We-feeling (B) Cultural diversity (C) Territory (D) Self-sufficiency

42. Which one of the provisions of Hindu Marriage has been altered by 'Special Marriage Act, 1954'?
- (A) Exogamy rules      (B) Hypergamy rules      (C) Endogamy rules      (D) Monogamy rules
43. Who was concerned with the composition of 'self' at the 'micro' level of social action and interaction?
- (A) Mead      (B) Goffman      (C) Berger      (D) Luckman
44. Orientalist were scholars who studied the culture of
- (A) India and China      (B) Greek and Roman  
(C) Egypt and Mesopotamian      (D) Far East countries
45. Basic principles of symbolic interactionism include
- (a) Human capacity for thought  
(b) Social institutions and social interactions  
(c) Mind and social consciousness  
(d) Meanings and symbols that facilitate action and interaction

Select the correct answer from the codes given below:

Codes:

- (A) (a) and (b)      (B) (b) and (c)      (C) (c) and (d)      (D) (a) and (d)

46. Good Hypothesis should be
- (A) Formulate in such a way that it can be tested by the data  
(B) Precise, specific and consistent with most known facts  
(C) Of limited scope and should not have level of significance  
(D) All of them.

47. Match List – I with List – II and mark the correct answer from the codes given below the lists:

List – I

(Author)

a. Sorokin

b. Dahrendorf

c. Spencer

d. Durkhiem

List – II

(Change Perspective)

i. Structural functional

ii. Cyclical

iii. Dialectical

iv. Evolutionary

Codes:

a b c d

(A) ii iii iv i

(B) i iii ii iv

(C) ii iv i iii

(D) iii i ii iv

48. For Talcott Parsons adaptation, goal attainment, integration and latency are:
- (A) Functional prerequisites      (B) Functional imperatives  
(C) Functional alternatives      (D) Functional universals

49. Which among the following is an example of a community?
- (A) Family      (B) Income group      (C) Refugee camp      (D) Village

50. Symbolic interactionism is a sociological perspective that places emphasis on:
- (A) Macro level social interaction  
(B) Micro scale social interaction  
(C) Interactions between social and non social entities  
(D) None of these